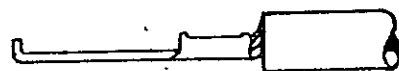
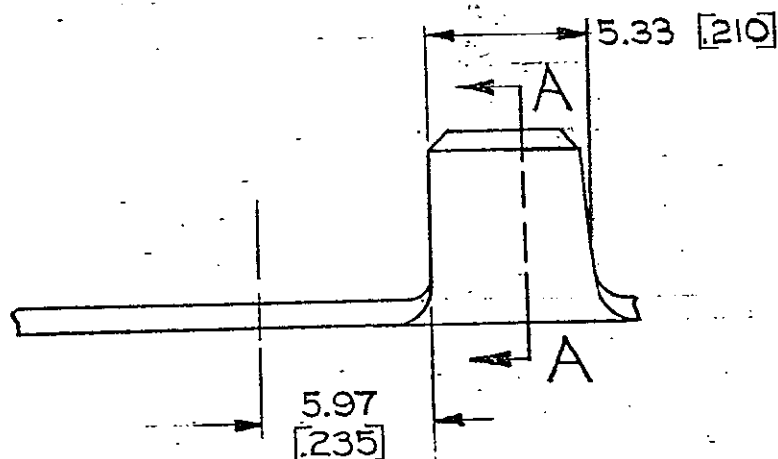
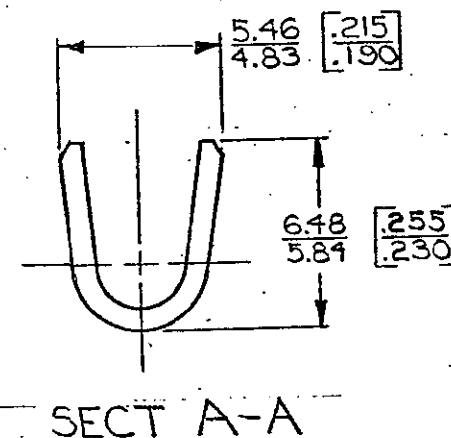
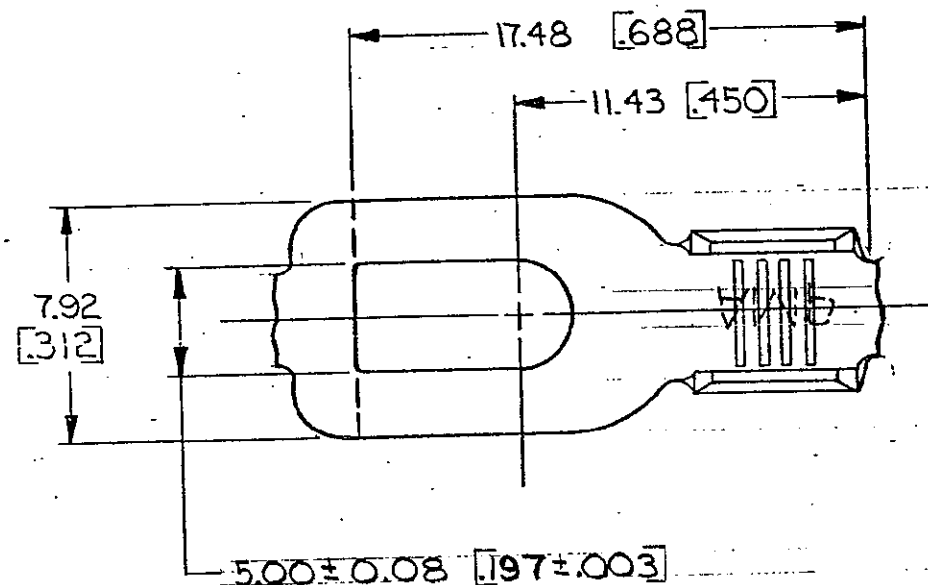


DRAWING MADE IN THIRD ANGLE PROJECTION

© COPYRIGHT 1968 BY AMP INCORPORATED, HARRISBURG, PA.
 ALL INTERNATIONAL RIGHTS RESERVED. AMP INCORPORATED PRODUCTS
 COVERED BY U. S. AND FOREIGN PATENTS AND/OR PATENTS PENDING.



FLANGED IN
 APPLICATOR



		REVISIONS			LOC	DIST
P	F	ZONE	LTR	DESCRIPTION	DATE	APPROVED
✓	✓		C	REDRAWN & REVISED A-3943 A.M.	1/5/78	
✓	✓		D	REVISED AF 0169	8/15/84	SP/GY
✓	✓		E	REV PER AF-6785	7/2/90	PMF/GY
✓	✓		F	REV PER DL10-0090-97	20/ECH	PMF/GY

- 1. SUFFIX LETTER MUST BE USED ONLY WHEN ORDERING APPLICATOR TOOLING
- 2. CONTINUOUS STRIP ON REELS.
- 3. DIMENSIONS IN BRACKETS ARE IN INCHES

METRIC

#10	3.0-5.0 mm ² [2-10]	NONE	0.76 [030] BRASS	40891-A 40891
STUD SIZE	WIRE RANGE	FINISH	MATERIAL	PART NO
UNLESS OTHERWISE SPECIFIED DIMENSIONS ARE IN mm TOLERANCES ON: DECIMALS ±0.38 [015] ANGLES ±1°	CONTRACT NO	AMP INCORPORATED Harrisburg, Pa.		
MATERIAL	DR	NAME		
SEE TABLE	CHK	SPADE		
FINISH	APPR	SIZE	CODE IDENT NO	DRAWING NO
SEE TABLE	APPR	B	00779	40891
	DSGN APPD	SCALE		SHEET
	OTHER APPD			

CUSTOMER DRAWING